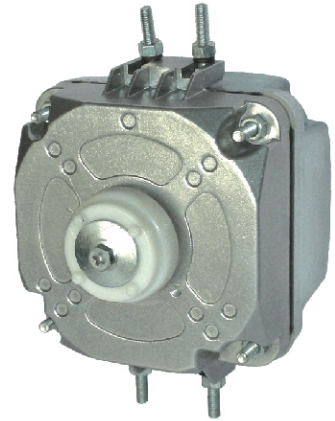




EC Motor

- Motor Design : EC Technology
- Housing : Aluminium Die-cast
- Bearing : Ball Bearing
- Operating Voltage : 230V (185 - 245 VAC)
- Dielectric Strength : AC 500V for 1 minute
- Insulation : Class F
- Insulation Resistance : Above 10M Ohms at 500 VDC
- Connection : Lead Wire
- Mounting : Any Position
- Motor Protection : Via Electronics
- Direction of Rotation : CCW
- Operating Temperature : - 40 to + 40°C
- Net Weight : 610 Grams

Model No. :- EC - 3612 - B2



Specification

Model	Bearing	Fan Blade	Angle Degree	Voltage	Frequency	Current	Input Power	Speed	Air Flow
REC	Ø			V	Hz	A	W	RPM	CFM
3612 B2	Ball	200	28°	230	50 / 60	0.060	6.0	1300	250
	Ball	200	34°	230	50 / 60	0.080	8.5	1300	290
	Ball	230	22°	230	50 / 60	0.070	7	1300	325
	Ball	230	28°	230	50 / 60	0.105	11.5	1300	450
	Ball	230	34°	230	50 / 60	0.130	15.0	1300	470
	Ball	254	22°	230	50 / 60	0.100	11	1300	440

Also Available in 115 VAC

